



Masters in Home Ventilation Since 1946



Lomanco Manufacturing Plant in Jacksonville, Arkansas

Our high product quality and functionality, combined with our well-recognized integrity and solid partner base has established Lomanco as the premier manufacturer of residential ventilation products in the world. Our success has been built on pride, dedication and the hard work of Lomanco owners, management, employees, sales representatives, vendors and customers since 1946.

— Your Lomanco Team

Contents	2	Power Vents	10	TileIntake® Vent	17
What is Ventilation?	3	LomanCool™ 2000	10	Tile Roof Turbine	17
Why Ventilate?	3	Add-A-Vent 1800.....	10	Intake Vents.....	18
3 Must Do Steps.....	3	Solar Power Vent	11	Drip Edge Soffit Vent	18
Omni Ridge Vents	4	Omni Solar Vent™	11	C-Series Cornice Vents.....	18
Shingle Over Ridge Vents	4	Omni Solar Gable Vent	11	Continuous Soffit Vents	19
Lo-OmniRoll®	5	Ventilation Solutions.....	12	Cirk - L - Vents.....	19
NEW! OmniRidge® Pro	5	Deck-Air® Vent - Intake.....	12	Gable Vents	20
OmniRidge®.....	5	Deck-Air® Vent - Exhaust	13	Triangular Line.....	20
Lo-OmniRidge®.....	5	Omni-Wall™	13	Square Line.....	20
OmniRoll®	5	LPR/VUR Ridge Vents	14	Foundation Vents	21
Static Roof Vents	6	Powered Crawlspace Vent	14	Carton Information Index....	22
Slant Back Style	7	EVA-34 & EVA Combo	15	Seminars & Digital Media	23
Pan Style	7	Cupola.....	15	Ventilation Seminars.....	23
Plastic Static Vents.....	7	Weather Vanes.....	15	Vent Selector App.....	23
Turbine Vents.....	8	Tile Roof Vents.....	16	Facebook.....	23
Whirlybird®	9	TileRidge® Vent.....	16	YouTube Channel.....	23
		Solar Tile Vent	16	Lomanco Website	23

What is Ventilation?

Ventilation is simply the process of supplying a continuous supply of air through the attic space. "Proper Ventilation" consists of 50% intake ventilation, near the lower part of the attic space, and 50% exhaust ventilation, near or at the roof peak, at least 3 feet higher than the intake system.

Why Ventilate?

To fight the enemies, heat and moisture, you must ventilate year round. Heat in unventilated attics may cause temperatures to exceed 150 degrees causing damage to shingles, roof sheathing, and possibly radiate to the living area. Moisture, being the #1 enemy, causes rot, mildew, mold, paint blisters, and renders insulation to be ineffective. Proper ventilation reduces energy bills, winter ice build up, and eliminates mold/mildew which can lead to major health problems. By ventilating, you are extending the life of shingles, insulation, and other building components.

Why Lomanco?

Lomanco has been producing quality ventilation products since 1946. Two factors have remained the same throughout the years. They are known as "The Lomanco Balance", free movement of air and weather protection. We take a great deal of pride in the production of our products. They are the necessity to be effective in ventilating homes everywhere. Product design does make a difference in quality ventilation products. Our commitment to providing these quality products, combined with our experienced personnel, is the reason Lomanco is your best choice for ventilation.

THREE MUST DO Steps to Attic Ventilation

1 Install all Exhaust Ventilation at the SAME HEIGHT within a common attic area.

Installation of exhaust vents at more than one level on a roof allows the upper exhaust vent to pull air in from lower exhaust vents rather than from the intake vents. Intake air must come from intake vents located near the lower part of the attic space to properly ventilate the total attic area and eliminate weather infiltration.

2 Install ONLY ONE TYPE of Exhaust Ventilation within a common attic area.

Exhaust Vents pull air from the easiest intake source. Vent types cannot be mixed. The use of different types of exhaust vents could make one of the vents act as intake for the other. Intake air must come from intake vents located near the lower part of the attic space to properly ventilate the total attic area and eliminate weather infiltration.

3 Install a BALANCED SYSTEM of Intake and Exhaust Ventilation.

50% Intake Ventilation - Intake vents located near the lower part of the attic area are required to balance out your ventilation system.

50% Exhaust Ventilation - Use a Lomanco Ventilation Selector Guide, the calculators at lomanco.com, or the Lomanco Vent Selector App to determine the number of vents needed to properly ventilate an attic to meet the minimum code ventilation standard.



Scan the QR Code for the following items:



Vent Selector App
Available for download on the App Store & Google Play Store

Sales Literature
Install Instructions
Product Specifications
Sales Videos
Installation Videos
Ventilation Calculators

SUBSCRIBE ON
YOUTUBE



[lomancovents](https://www.youtube.com/channel/UCm0v0v0v0v0v0v0v0v0v0v0)

FIND US ON
FACEBOOK



[lomanco](https://www.facebook.com/lomanco)



LOR-30

Lomanco® Shingle Over Ridge Vents

Lomanco Omni Series Ridge Vents are available in two styles and many variations. The roll version comes in easy to handle 20 and 30 foot lengths, while the stick version comes in 4 foot lengths. The regular **Omni style** is traditionally installed using a hammer, while the **Lo-Omni style**, with its low profile, can be installed using a nail gun.

Features—All Omni Series Shingle Over Ridge Vents come with a lifetime limited warranty. The engineered material guarantees it will last as long as your shingles.

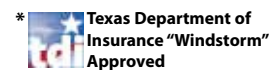
Other common features of Omni Series Ridge Vents include the air flow acceleration design, which maximizes ventilation capacity, along with the internal aerodynamic curved baffles and external perpendicular omni baffles, which maximize weather protection. External omni baffles allow air flow from any direction, while the internal baffles maintain superior weather protection and performance with no filter to clog. Each Omni Series Ridge Vent design is field tested and proven effective under all weather conditions.

Installation—Installation of Omni Series Ridge Vents is fast and easy and will fit any roof pitch from a 2/12 to a 16/12. The Omni Series Ridge Vents feature supported nail holes every foot and will not crush down. Molded-in visual nail lines and center lines along with the patented fan-folded end plugs mean no accessories, connectors or alterations are needed.

Common Features

- ▶ Lifetime limited warranty.
- ▶ Adjusts from 2/12 to 16/12 roof pitches.
- ▶ Engineered material guarantees longevity.
- ▶ Field tested design - proven effective under all weather conditions.

Model	LTH (ft.)	NFA (in. ²)
LOR-30 * † ‡ §	30'	330
LOR9-4 † ‡ §	4'	44
LOR9-4FR	4'	44
OR-20 §	20'	360
OR-4 * † ‡ §	4'	72
OR4-N * †	4'	72
OR4-S * † §	4'	72
PRO4-N * †	4'	72
PRO4SWN §	4'	72



OmniRidge[®] Pro

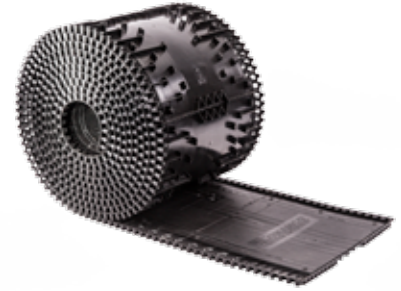
PRO4 Series
NEW!



- ▶ Advanced low-profile design.
- ▶ Weatherproof under-lapping joint.
- ▶ Six drain holes per foot per side.
- ▶ Pre-formed to 2/12 pitch.
- ▶ "Posi-tabs" contour to shingles for advanced weather protection.
- ▶ PRO4-N includes 2½" ring shank nails, 30 nails per piece.
- ▶ PRO4SWN has screen attached for added protection.

Lo-OmniRoll[®]

LOR-30



- ▶ Compact 30 foot roll is easy to handle.
- ▶ Pneumatic nail gun or hammer installed.
- ▶ Exterior convolute baffles—incurved design allows flexibility to roll up and out while maintaining its shape.
- ▶ Two coils of 1¾" nails provided.
- ▶ Can be cut at one foot intervals—multiple cut lines eliminates unnecessary scrap.

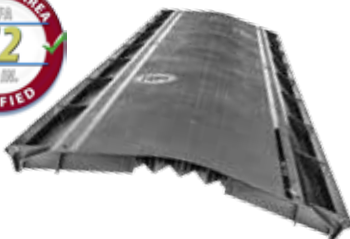
CHART INSTRUCTIONS: Use the charts in this catalog by selecting the **Attic Floor Space** to be ventilated in the green sections and an **Exhaust System** in the red sections, find where they intersect to determine the number of exhaust vents needed. Repeat the steps in the blue **Intake System** sections to find the number of intake vents needed for a balanced ventilation system. To calculate your ventilation system to your exact square footage scan the QR code on page 3 with your mobile device or visit lomanco.com.

How many Ridge Vents do you need?

EXHAUST SYSTEMS	Attic floor space to be ventilated in square feet:																																														
	1000						1500						2000						2500						3000						3500																
	Intake			Exhaust			Intake			Exhaust			Intake			Exhaust			Intake			Exhaust			Intake			Exhaust																			
LOR30 / LOR9-4	22'	10	7	4	4	3	33'	15	10	6	5	6	11	44'	20	14	8	7	6	8	14	55'	25	17	10	9	7	10	17	66'	30	20	12	11	9	12	21	77'	34	23	14	12	10	14	24		
OR20 / OR-4	14'	11	7	4	4	3	4	7	20'	15	10	6	5	6	10	27'	20	14	8	7	6	8	14	34'	25	17	10	9	7	10	17	40'	29	20	12	10	9	12	20	47'	34	23	14	12	10	14	24
PRO4 Series	14'	11	7	4	4	3	4	7	20'	15	10	6	5	6	10	27'	20	14	8	7	6	8	14	34'	25	17	10	9	7	10	17	40'	29	20	12	10	9	12	20	47'	34	23	14	12	10	14	24
DA-4 / OW-4	27'	10	7	4	4	3	4	7	40'	15	10	6	5	6	10	54'	20	14	8	7	6	8	14	67'	25	17	10	9	7	10	17	80'	29	20	12	10	9	12	20	94'	34	23	14	12	10	14	24

OmniRidge[®]

OR-4 Series



- ▶ External venturi baffle.
- ▶ Weatherproof under-lapping joint.
- ▶ Four drain holes per foot per side.
- ▶ Pre-formed to 3/12 pitch.
- ▶ External water shield.
- ▶ OR4-N includes 30, 2½" ring shank nails per piece.
- ▶ OR4-S has screen attached for added protection.

Lo-OmniRidge[®]

LOR9-4



9" WIDE



- ▶ Pneumatic nail gun or hammer installed.
- ▶ External venturi baffle.
- ▶ Weatherproof underlapping joint.
- ▶ External water shield.
- ▶ Molded centerline for fast and easy alignment.



OmniRoll[®]

OR-20



- ▶ Compact 20 foot roll is easy to handle.
- ▶ Exterior convolute baffles—incurved design allows flexibility to roll up and out while maintaining its shape.
- ▶ Can be cut at one foot intervals—multiple cut lines eliminate scrap.



Lomanco® Static Roof Vents

Lomanco provides a complete line of Roof Vents from which to choose. Static Vents are available in two designs, Slant Back and Pan Style, to fit all of your ventilation needs. The Slant Back design is available in Aluminum, Plastic, and Galvanized finishes. Lomanco Pan Style Series consists of the 550, 600, and 135 Roof Vents and are available in aluminum finish (550 PRO also available in galvanized finish).

common features include a bird-proof design, a weather tight collar, and a flange on the vent stack for superior weather protection and circulation.

Installation—

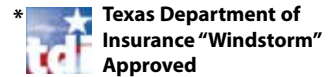
All Lomanco Static Vents offer a large nailing flange for ease of installation. The Lomanco® Slant Back is designed to be installed on any roof pitch.

The Lomanco 750 Original Slant Back— Often Imitated, but Never Duplicated.

Features—L o m a n c o Static Vents are exhaust vents by design. Each vent's unique design offers maximum weather protection. All of Lomanco Static Roof Vents are available in several colors to blend with your roofing materials. Other



Model	Overall Size (in.)	Opening Size (in.)	Net Free Area (in. ²)
730*	12 ³ / ₁₆ x 17 ³ / ₄ x 4	6 1/4	30
750*	16 x 20 ⁵ / ₁₆ x 5	8	50
750-S*	16 x 20 ⁵ / ₁₆ x 5	8	50
750-G*	16 x 20 ⁵ / ₁₆ x 5	8	50
Galvanized Steel			
750-GS*	16 x 20 ⁵ / ₁₆ x 5	8	50
Galvanized Steel			
750-E	23 x 27 ¹ / ₄ x 5	8	50
750-ES	23 x 27 ¹ / ₄ x 5	8	50
770*	16 ⁵ / ₈ x 22 ³ / ₈ x 6	9 1/2	70
770-D*	32 ¹ / ₂ x 22 ³ / ₈ x 6	Two 9 1/2	140
700	16 x 20 ⁵ / ₁₆ x 5	8	—
550	15 ³ / ₈ x 16 ³ / ₈ x 4	9	50
550-S	15 ³ / ₈ x 16 ³ / ₈ x 5 1/2	9	50
550 PRO	15 ³ / ₈ x 16 ³ / ₈ x 3 3/4	9	50
550 PRO-G	15 ³ / ₈ x 16 ³ / ₈ x 3 3/4	9	50
600	16 ⁵ / ₈ x 18 ⁷ / ₈ x 4	9 1/2	60
600-D	32 ¹ / ₂ x 18 ⁷ / ₈ x 4	Two 9 1/2	120
600-S	16 ⁵ / ₈ x 18 ⁷ / ₈ x 6 1/2	9 1/2	60
135*	20 x 23 x 7 3/4	14	144
845	14 ³ / ₈ x 17 ¹ / ₄ x 4	6 3/4 x 8 1/2	41
865	16 1/2 x 19 ³ / ₈ x 4 3/4	8 1/2 x 10 1/4	61
865-S	16 1/2 x 19 ³ / ₈ x 6 1 1/16	8 1/2 x 10 1/4	61



How many Static Vents do you need?

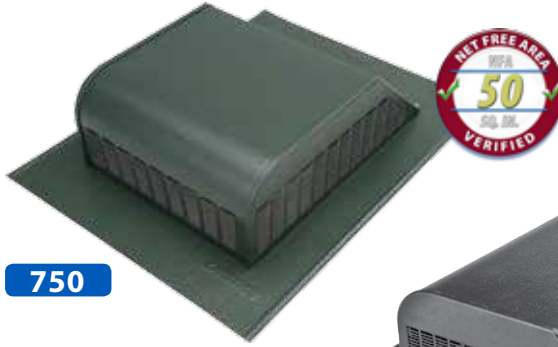
Attic floor space to be ventilated in square feet:

EXHAUST SYSTEMS	1000										1500										2000										2500										3000										3500																																																																																																																																																																																																																																																																																																																																																																																																																																																																																																																																																																																																																																																													
	Exhaust	C416	C616	C816	105/190	140	SV-10	DA-4/IV-9	Exhaust	C416	C616	C816	105/190	140	SV-10	DA-4/IV-9	Exhaust	C416	C616	C816	105/190	140	SV-10	DA-4/IV-9	Exhaust	C416	C616	C816	105/190	140	SV-10	DA-4/IV-9	Exhaust	C416	C616	C816	105/190	140	SV-10	DA-4/IV-9	Exhaust	C416	C616	C816	105/190	140	SV-10	DA-4/IV-9																																																																																																																																																																																																																																																																																																																																																																																																																																																																																																																																																																																																																																																																
550	5	10	7	4	4	3	4	7	8	16	11	7	6	5	7	12	10	20	14	8	7	6	8	14	12	24	17	10	9	7	10	17	15	30	21	12	11	9	12	21	17	34	23	14	12	10	14	24	20	40	28	17	14	11	14	28	24	48	34	21	17	13	16	34	28	56	39	24	19	14	19	40	34	68	48	29	23	17	23	48	40	80	56	34	27	20	28	56	48	96	68	41	31	23	34	68	56	112	80	48	37	27	41	80	64	128	96	56	43	31	48	96	72	144	104	63	47	35	56	112	80	160	112	70	51	39	64	128	90	180	126	77	55	43	72	144	100	200	140	84	59	47	80	160	110	220	154	91	63	51	90	180	120	240	168	98	67	55	100	200	130	260	182	105	71	59	110	220	140	280	196	112	75	63	120	240	150	300	210	119	79	67	130	260	160	320	224	126	83	71	140	280	170	340	238	133	87	75	150	300	180	360	252	140	91	79	160	320	190	380	266	147	95	83	170	340	200	400	280	154	99	87	180	360	210	420	294	161	103	91	190	380	220	440	308	168	107	95	200	400	230	460	322	175	111	99	210	420	240	480	336	182	115	103	220	440	250	500	350	189	119	107	230	460	260	520	364	196	123	111	240	480	270	540	378	203	127	115	250	500	280	560	392	210	131	119	260	520	290	580	406	217	135	123	270	540	300	600	420	224	139	127	280	560	310	620	434	231	143	131	290	580	320	640	448	238	147	135	300	600	330	660	462	245	151	139	310	620	340	680	476	252	155	143	320	640	350	700	490	259	159	147	330	660	360	720	504	266	163	151	340	680	370	740	518	273	167	155	350	700	380	760	532	280	171	159	360	720	390	780	546	287	175	163	370	740	400	800	560	294	179	167	380	760	410	820	574	301	183	171	390	780	420	840	588	308	187	175	400	800	430	860	602	315	191	179	410	820	440	880	616	322	195	183	420	840	450	900	630	329	199	187	430	860	460	920	644	336	203	191	440	880	470	940	658	343	207	195	450	900	480	960	672	350	211	199	460	920	490	980	686	357	215	203	470	940	500	1000	700	364	219	207	480	960	510	1020	714	371	223	211	490	980	520	1040	728	378	227	215	500	1000	530	1060	742	385	231	219	510	1020	540	1080	756	392	235	223	520	1040	550	1100	770	399	239	227	530	1060	560	1120	784	406	243	231	540	1080	570	1140	798	413	247	235	550	1100	580	1160	812	420	251	239	560	1120	590	1180	826	427	255	243	570	1140	600	1200	840	434	259	247	580	1160	610	1220	854	441	263	251	590	1180	620	1240	868	448	267	255	600	1200	630	1260	882	455	271	259	610	1220	640	1280	896	462	275	263	620	1240	650	1300	910	469	279	267	630	1260	660	1320	924	476	283	271	640	1280	670	1340	938	483	287	275	650	1300	680	1360	952	490	291	279	660	1320	690	1380	966	497	295	283	670	1340	700	1400	980	504	299	287	680	1360	710	1420	994	511	303	291	690	1380	720	1440	1008	518	307	295	700	1400	730	1460	1022	525	311	299	710	1420	740	1480	1036	532	315	303	720	1440	750	1500	1050	539	319	307	730	1460	760	1520	1064	546	323	311	740	1480	770	1540	1078	553	327	315	750	1500	770D	1540	1078	553	327	315	770D	1540

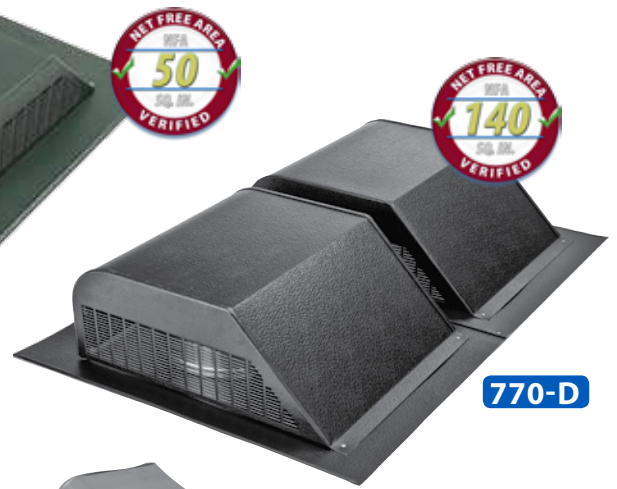
Chart instructions available on page 5.

700 Series

- ▶ Designed to prevent roof discoloration.
- ▶ Three sides louvered for greater air flow.
- ▶ Embossed aluminum finishes add strength, extend paint life, and blend with roofing materials.
- ▶ 700 has neoprene damper for use as kitchen/bathroom exhaust vent.
- ▶ 730 is a smaller version of a 750 and included in the EVA Combo vent package. (See page 15)
- ▶ 750-E is a 750 with an extended flange size.
- ▶ 750-S, 750-GS and 750-ES; metal screen insert for enhanced weather protection.
- ▶ 750-G; heavy duty galvanized steel construction.
- ▶ 770 is larger version of a 750.
- ▶ 770-D is a twin 770; off-ridge vent.



750

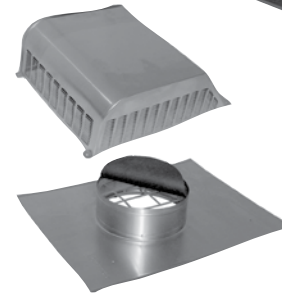


770-D

Copper 750



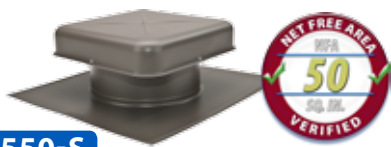
Specialty Item Available



700

550 & 600 Series

- ▶ Includes 8x8 perma-coated screen for added protection.
- ▶ Flange on vent stack for superior weather protection.
- ▶ Models 600-S and 550-S have a tall throat to allow room for air circulation on shake roofs after the installation of shakes.
- ▶ 550 PRO has one-piece molded plastic collar for added protection and tool-less removable top.
- ▶ 550 PRO-G is galvanized.
- ▶ 600-D is a twin 600.



550-S



550 PRO NEW!



600



600-D

135 Roof Vent

- ▶ All-aluminum construction.
- ▶ 8x8 aluminum screen attached for added protection.
- ▶ Weather-shielding rain guard for maximum weather protection.



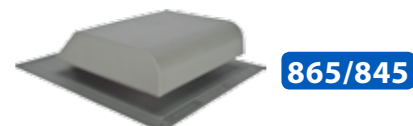
135

800 Series

- ▶ Made of durable ABS plastic.
- ▶ UV Protection for longer life.
- ▶ Large nailing flange with pre-drilled nail slots to allow for expansion and contraction and ease of installation.
- ▶ 8x8 perma-coated screen extends to the edges of the cap for added protection.
- ▶ 865-S has a tall throat to allow room for air circulation on shake roofs.



865-S



865/845





All-Weather Turbine Vent Whirlybird®

Lomanco® Whirlybird® Turbine Vents

Lomanco is the home of the original Whirlybird Turbine Ventilator, the All Weather Whirlybird Turbine. Whirlybird Turbines offer all of the essentials for energy savings and are geared toward going green. They are available in three sizes—8”, 12”, and 14”. The 14” Big Whirly turbine moves 37% more air than the 12”. The 12” turbine is available in aluminum and galvanized finishes as well as a Tile Roof design. Whirlybird turbines are also available in two models—internally or externally braced. While the internally and externally braced turbines both have the same internal construction, the externally braced turbines have three braces that surround the outside of the turbine.

Features—All Lomanco Whirlybird turbines come with a Lifetime Transferable Warranty. Simply put, you can’t buy a better turbine. The turbine design features permanently lubricated upper and lower ball bearings that ensure long life and no maintenance. Other common features of the turbine are its rigid spider-type construction—riveted at every connection and tested to withstand winds of 110 M.P.H., 21 air-foil curved vanes with rolled edges to deflect water, and 100% rust-free all-aluminum construction.

Installation—The Whirlybird turbine's large flashing makes installation easy. The Whirlybird turbine's exclusive vari-pitch base adjusts to a 12/12 roof pitch for use on many roof applications. When installed properly, the Whirlybird turbine reduces energy bills and the likelihood of winter ice buildup.

Available Colors




foreverguarantee
The Quality & Performance of the Lomanco®
Whirlybird® Turbine is Guaranteed Forever

Model	Hole Size	Height	Base
B I B-12*	12	17¼	20 x 20
BEB-12*	12	17½	20 x 20
B I B-12TR*	12	20¼	20 x 20
BEB-12TR*	12	20½	20 x 20
B I B-14*	14	20	22 x 22
BEB-14*	14	20½	22 x 22
T I B-12	—	11¼	—
TEB-12	—	11½	—
T I B-14	—	11½	—
TEB-14	—	12	—
GT-12	12	15¾	20 x 20
GEB-12	12	16	20 x 20
I B-8 (Top)	8	14¼	-
VP-8 (Bottom)	8	7¾	16 x 16

All B Series Turbines



*  Texas Department of Insurance “Windstorm” Approved

BIB-12



BIB-12



BIB-12



BEB-14



BEB-14



- ▶ Forever guarantee—residential use only.
- ▶ All-aluminum construction.
- ▶ Exclusive vari-pitch base adjusts to 12/12 roof pitch.
- ▶ Tested to withstand winds of 110 M.P.H.
- ▶ Easy installation.

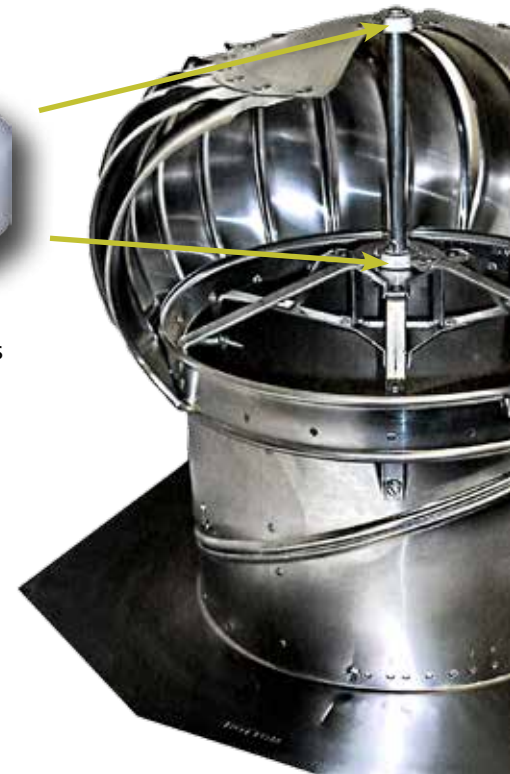
GT-12



- ▶ 0.015 stamped galvanized steel.
- ▶ Fits any roof pitch to 7/12.
- ▶ GT-12 is an internally braced 12" turbine.
- ▶ GEB-12 is an externally braced 12" turbine.
- ▶ Residential or light commercial use only.



Permanently lubricated upper and lower ball bearings that ensure long life and no maintenance.



General Specifications for Whirlybird Turbines

- ▶ BIB & TIB are **internally** braced.
- ▶ BEB & TEB are **externally** braced.
- ▶ GT-12, GEB-12, & IB-8 available in mill finish only.
- ▶ Model number denotes throat size.
- ▶ **TR** turbines are for tile roof applications.
- ▶ **B** Series are packaged with base.
- ▶ **T** Series are packaged without base.

How many Turbine Vents do you need?

TURBINE VENT EXHAUST SYSTEMS	Attic floor space to be ventilated in square feet:									
	1000	1500	2000	2500	3000	3500				
12"	2	2	3	4	4	5				
14"	1	2	2	3	3	4				
Intake										
Selected Turbine Size	12"	14"	12"	14"	12"	14"	12"	14"	12"	14"
C416	21	14	21	28	32	28	42	42	42	52
C616	15	10	15	19	22	19	29	29	29	36
C816	8	6	8	11	12	11	16	16	16	20
105/190	8	5	8	10	11	10	15	15	15	18
140	6	4	6	8	9	8	12	12	12	15
SV-10	9	6	9	11	13	11	17	17	17	21
DA-4/IV-9	15	10	15	20	22	20	29	29	29	36

Chart instructions available on page 5.

Hurricane caps for 12" and 14" turbines are available.



2000

LomanCool™ 2000

- ▶ Deep drawn flange and unique rain shield keep water out.
- ▶ Factory-set adjustable thermostat (switches on at 100 degrees and off at 85 degrees).
- ▶ Adjustable humidistat settings are: minimum 80%, normal 42%, and maximum 20%.
- ▶ 8x8 aluminum screen attached for added protection.
- ▶ 2000TH model equipped with thermostat/humidistat combo switch.
- ▶ 5 Year limited warranty.

Copper 2000



Specialty Item Available

Lomanco® Standard Power Vents

Lomanco Standard Power Vents are designed for quiet operation and high volume air removal. Lomanco offers two styles of electric power vents—the LomanCool 2000 and the 1800 Add-A-Vent. The LomanCool 2000 is a roof mount power vent and the 1800 is designed to be mounted behind an existing vent to add powered ventilation to a gable.

Features—Lomanco Standard Power Vents are made of all aluminum construction. Other common features include a 5 year limited warranty, balanced fan blades for quiet operation, and an American-made motor. An optional humidistat is available for both the 2000 and the 1800. The LomanCool 2000TH comes equipped with an adjustable thermostat/humidistat combo control to accommodate individual attic humidity levels.

Installation—Lomanco Standard Power Vents are equipped with an adjustable thermostat that features a “push-to-test” button, allowing homeowners to make sure the unit is operating properly.

Available Colors



Add-A-Vent 1800

- ▶ Factory-set adjustable thermostat (switches on at 100 degrees and off at 85 degrees).
- ▶ Can be mounted in horizontal or vertical positions on either 16" or 24" on center framing members.
- ▶ Optional humidistat is adjustable to fit individual attic humidity levels.
- ▶ Designed to mount behind existing gable louver.
- ▶ 5 Year limited warranty.



1800

How many Power Vents do you need?

POWER VENT EXHAUST SYSTEMS	Attic floor space to be ventilated in square feet:					
	1000	1500	2000	2500	3000	3500
2000	1	2	2	3	3	4
1800	1	2	2	3	3	4
OSV40	1	2	2	3	3	4
SGABLE40	1	2	2	3	3	4

Intake						
C416	31	62	62	93	93	123
C616	21	42	42	63	63	84
C816	12	24	24	36	36	48
105/190	11	22	22	32	32	43
140	9	18	18	27	27	35
SV-10	13	25	25	37	37	49
DA-4/IV-9	22	43	43	64	64	86

Chart instructions available on page 5.

NOTE: Lomanco recommends the use of one gable vent per gable end of structure. Your roof must have the required number of gable ends to install the proper number of gable vents for a balanced ventilation system.

Model	Amps	Motor		Volts	Base (in.)	Fan Blades	
		HP	RPM			No.	DIA. (in.)
2000 * + §	3.4	1/10	1100	120	20 x 23	5	12
2000TH	3.4	1/10	1100	120	20 x 23	5	12
1800 §	3.4	1/10	1100	120	—	5	12

Original parts and accessories for Lomanco power vents are available online at lomanco.com.



* Texas Department of Insurance "Windstorm" Approved



Omni Solar Vent™

OSV40



Lomanco® Solar Power Vents

Lomanco Solar Power Vents are your attic's best choice for solar powered protection against heat and moisture from sun-up to sun-down. We have created a unique design that is not only functional, but looks good on the roof.

Features—The Omni Solar Vent and Omni Solar Gable vent feature a 40 Watt solar panel, the largest standard panel offered on solar attic vents. They also include a 10 year limited warranty and a 5 Year limited warranty on the solar panel and motor. Other common features include a whisper quiet motor and precision balanced 5 blade fan.

Installation—Installation couldn't be easier with our Solar Power Vents. In fact, there is no need for an electrician. The Omni Solar Vent and Omni Solar Gable Vent will operate automatically when the solar panel is illuminated by sunlight.

Available Colors



- ▶ The OSV40 is a **Proven Best Performer** for solar powered attic ventilation.
- ▶ Heavy duty aluminum construction.
- ▶ Upward exhaust prevents roof discoloration.
- ▶ Low profile design blends with roof profile.
- ▶ Internal screen for added protection.

Common Features

- ▶ 40 Watt solar panel.
- ▶ 15 foot power cord.
- ▶ Solar panel remotely mounted for optimum energy collection.
- ▶ Easy Installation. No electrician required.
- ▶ 10 Year limited warranty, 5 Year on solar panel & motor.
- ▶ Eligible for a 30% Federal Tax Credit for Homeowners. See the Solar Power Vent page on lomanco.com for further details.



Omni Solar Gable Vent

- ▶ Provides additional ventilation to gable vents.
- ▶ Whisper quiet motor.
- ▶ Precision balanced 5 blade fan.
- ▶ 768 square inches of Net Free Area required for each vent.
- ▶ Glass-filled polypropylene shroud.



SGABLE40

Model	Base (in.)	Fan Blades	
		No.	DIA. (in.)
OSV40 * †	33½ x 33½	5	14
SGABLE40	17½ x 17 x 6	5	14



* Texas Department of Insurance "Windstorm" Approved

Fully Supported
Tapered Transition.

Off Roof Edge Installation

Deck-Air® Vent

The Lomanco Deck-Air® is a low profile shingle over intake vent that can be installed on or off the roof edge. The DA-4 also has the option to be used as an off-ridge exhaust vent.

Features—The DA-4 has a unique design for enhanced weather protection and is made from the same durable, long lasting and field tested material as the Lomanco Omni Series. The DA-4 offers 9 square inches of Net Free Area per linear foot and comes with a Lifetime Limited Warranty.

Installation—The DA-4 is designed to fit any roof pitch from a 3/12 to a 16/12. Installation is made easy with supported nail holes, molded nail lines, shingle stop alignment tabs, slot width guidelines, and integrated end plugs every 2 inches.



Roof Edge Installation

Molded-in Cut
Lines for Tapered
Transitions.

Engineered
Material
Guarantees
Longevity.



10 Supported
Nail Holes.

Shingle Stop
Alignment Tabs.

DA-4

Model	Length (ft.)	NFA (in. ²)	Roof Pitch
DA-4	4'	36	3/12 to 16/12

How many Deck-Air® Vents do you need?
See chart on page 5.



- ▶ Low profile blends with roof construction.
- ▶ 2 1/2" ring shank nails included.
- ▶ Made from the same durable, long lasting and field tested material as the Lomanco Omni Series vents.
- ▶ Fits roof pitches 3/12 to 16/12.
- ▶ Unique design provides enhanced weather protection.
- ▶ Integrated end plug every 2 inches.

- ▶ 9 square inches of Net Free Area per linear foot.
- ▶ Molded nail lines.
- ▶ Intake slot width guidelines.
- ▶ **Optional Specialty Use:**
The DA-4 can be used as an off-ridge exhaust vent (see installation instructions).
- ▶ Lifetime Limited Warranty.

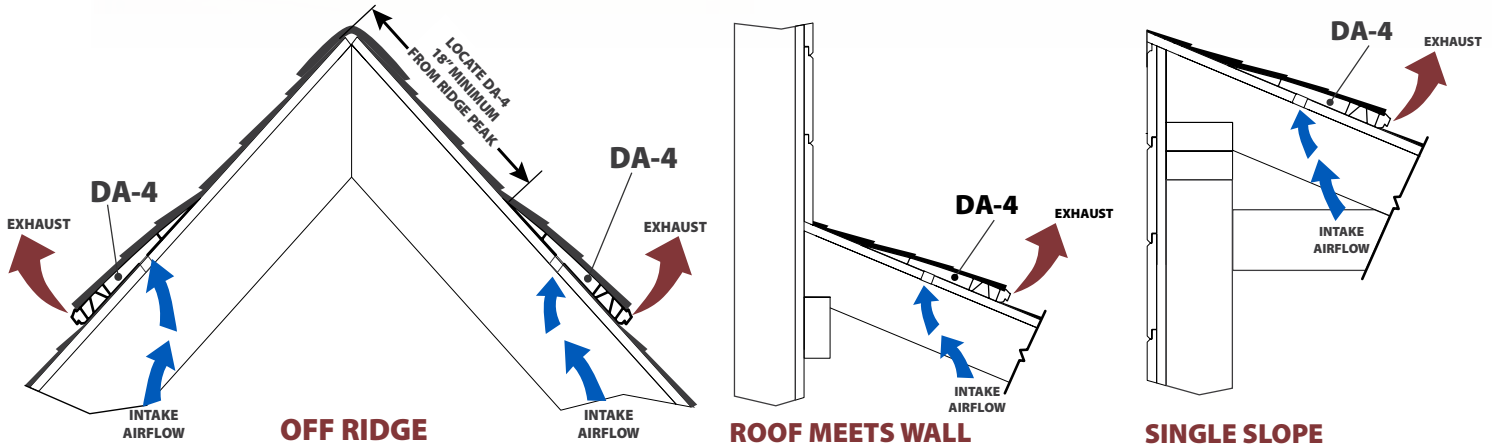
THE MULTI-PURPOSE EXHAUST SOLUTION.



Off Ridge Exhaust Installation

Deck-Air® Vent as Exhaust

EXHAUST INSTALLATION APPLICATIONS:



Omni-Wall™

The Lomanco Omni-Wall Shingle Over Vent offers functional ventilation for where your roof joins a wall. The OW-4 may also be used in a contemporary shed roof (mono-slope/single-slope) application.

Features—The OW-4 is designed for maximum weather protection, offering internal aerodynamic curved baffles with external perpendicular omni baffles. An external water shield and four drain holes per foot are also incorporated into the design of the vent. The OW-4 offers 9 square inches of Net Free Area per linear

foot and comes with a Lifetime Limited Warranty.

Installation—The OW-4 is designed to fit any roof pitch from a 2/12 to a 16/12. Installation is made easy with supported nail holes, molded nail lines, alignment tabs, slot width guide lines, and molded-in end plugs.



OW-4



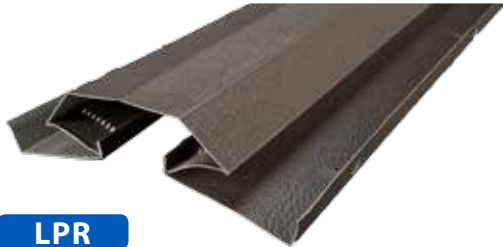
- ▶ Weatherproof underlapping joint.
- ▶ External venturi baffle.
- ▶ Supported nail holes.
- ▶ High grade, high impact UV resistant material.
- ▶ Lifetime limited warranty.

How many Omni-Wall™ Vents do you need? See chart on page 5.

Model	Section LTH.	Net Free Area (in. ²)
OW-4	4'	36

LPR / VUR

Lomanco offers two styles of Aluminum Ridge Vents—the LPR and VUR. The LPR Ridge Vent is available in 8' or 10' sections and is adjustable to fit 3/12 to 12/12 roof pitches. The VUR Ridge Vent is available in 10' sections and is adjustable to fit 3/12 to 8/12 roof pitches.



LPR

- ▶ Low profile blends with roof construction.
- ▶ Large 2-inch-wide nailing flange.
- ▶ Easy installation, male/female connections—no straps necessary.
- ▶ Optional strap available in all colors.
- ▶ LPR has an aerodynamic design revolutionary three-baffle system for complete weather protection.

Features—Lomanco LPR and VUR Ridge Vents are made of embossed aluminum finishes for added strength, extended paint life, and blending appearance with shingles. Both offer a high Net Free Area—18 square inches of NFA per foot.

Installation—The LPR and VUR are manufactured with pre-notched nail holes for easy installation. Both are one-piece construction and can be cut

at desired length at two-foot intervals. Hurricane straps and tight fitting, high density polyethylene foam end-plugs are available for both the LPR and VUR.

MIAMI-DADE COUNTY
APPROVED

* Texas Department of Insurance "Windstorm" Approved

Available Colors

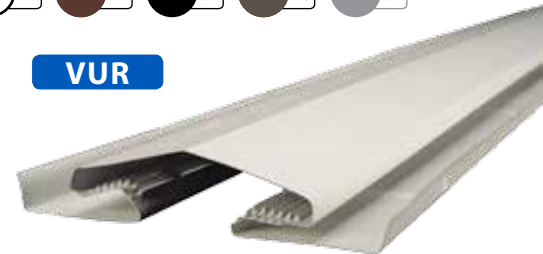


VUR Only

Model	Section LTH.	Net Free Area (in. ²)
LPR-8*	8	144
LPR-10*	10	180
VUR-10*	10	180
V-Plug	—	—
L-Plug	—	—

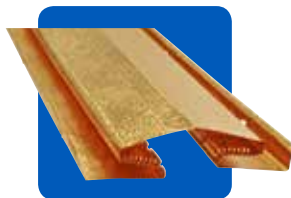
LPR and VUR hurricane straps are available.

VUR



- ▶ Easy installation, male/female connections—no straps necessary.
- ▶ Engineered weather infiltration protectors at each connection.
- ▶ Exterior wind baffles.

Copper VUR



Specialty Item Available

L-PLUG

V-PLUG



Powered Crawlspace Vent

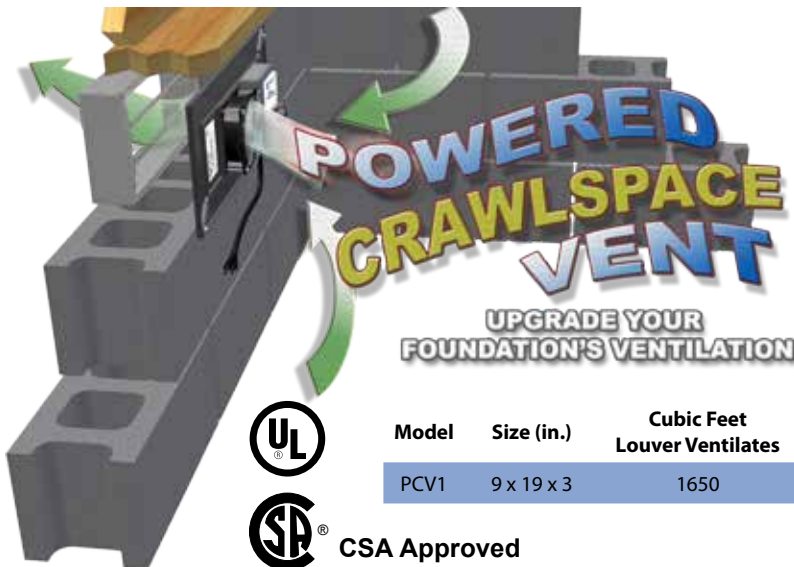
The Lomanco® Powered Crawlspace Vent (PCV1) is a quick and simple solution for under-ventilated crawlspaces. The PCV1 upgrades your present foundation vent and dries the crawlspace gradually. The PCV1 is made of tough polypropylene construction.

Installation—The PCV1 mounts behind an existing foundation vent for invisible operation and offers easy installation in a variety of constructions.



PCV1

- ▶ Quiet 110 CFM ball bearing motor.
- ▶ Humidity sensor for worry free operation.
- ▶ Thermostat shuts fan off at low temperatures.
- ▶ U.L. approved means assured safety.
- ▶ Can help stop mold growth.
- ▶ Upgrades your present foundation vent.
- ▶ 1 year limited warranty.



UPGRADE YOUR FOUNDATION'S VENTILATION

Model	Size (in.)	Cubic Feet Louver Ventilates
PCV1	9 x 19 x 3	1650



CSA Approved

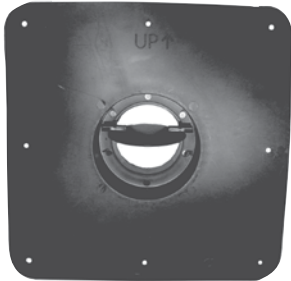
EVA-34 & EVA Combo Vent

Lomanco offers an exhaust vent adapter for our Static Roof Vent Series. The EVA-34 works with any Static Roof Vent while blending with existing accessories. The EVA-34 is designed to fit a 3" or 4" flexible duct. The EVA Combo Vent is a Lomanco® 730 Static Roof Vent that comes with an EVA-34 adapter.

Installation—The EVA-34 is ideal for new construction and can be a solution for existing homes as well. The EVA-34 can be installed from the top of the roof deck or from inside the attic to the Static Roof Vent or to a Cornice Vent in the soffit area.

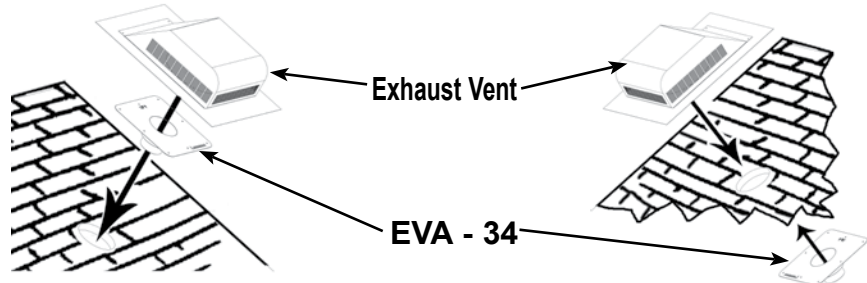


EVA-34



- ▶ Exhaust vent adapter fits 3" or 4" flexible duct.
- ▶ Installs from top of deck or inside of attic to roof vent or cornice vent.
- ▶ Exhausts household moisture.
- ▶ Tested for all climates.
- ▶ Built in damper prevents backdraft.
- ▶ Works with any roof system.
- ▶ Ideal for new construction.
- ▶ Solution for existing homes.
- ▶ Blends with existing accessories.
- ▶ 10" nailing flange.

Model	Size (in.)	Fits
EVA-34	10 x 10 x 3¼	3" or 4"



Cupola & Weather Vanes

The Lomanco® DRB-24 Cupola offers an elegant answer to your ventilation needs. The DRB-24 is made of all aluminum construction. A built in rain shield and an 8x8 perma-coated screen are engineered into the design to assure maximum weather protection.

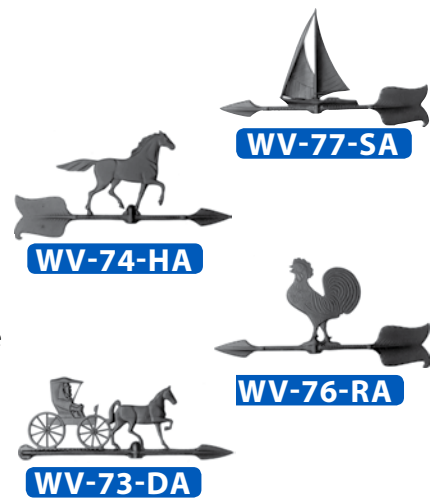
Installation—The DRB-24 has a vari-pitch base that adjusts from a 2/12 to a 6/12 roof pitch. It is installed over a 17" by 17" hole, straddling the roof peak. Weather vanes are also available in four styles and are sold separately.



Model	Size (in.)	NFA (in. ²)
DRB-24	24 x 24 x 24	254
WV-74-HA	—	—
WV-73-DA	—	—
WV-76-RA	—	—
WV-77-SA	—	—
Clutch Base	—	—

Weather Vane Features

- ▶ Cast aluminum with black enamel finish.
- ▶ Four styles available.
- ▶ Weather vanes include ornament pole and directional.
- ▶ Measures 24¼" high and arrow under the main figure is 18½" long.
- ▶ Clutch bases are available from Lomanco on special order. For use on pitch roof when not using a cupola.



TileRidge® Vent



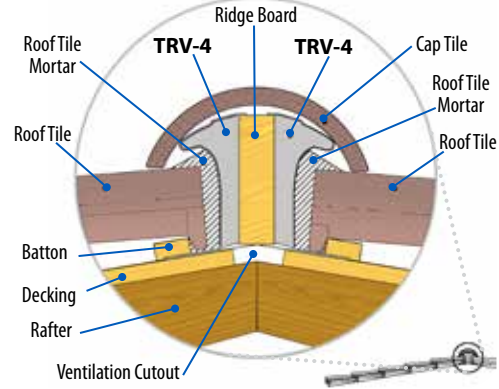
TRV-4

The **Lomanco® TRV-4 TileRidge** exhaust vent provides proper and functional attic ventilation for tile roofs (compatible with high and medium profile “S” tile roofs with 2”x 6” ridge pole at this time). The excellent airflow design of the TileRidge affords superior weather protection with no filter to clog.

Features—The TRV-4 is made of a tough, durable engineered material that guarantees longevity backed with a 30 year transferrable warranty. The TileRidge can be used with any intake vent that will provide the proper amount of NFA for a balanced system. If possible, Lomanco recommends using the TileRidge exhaust vent with the TileIntake intake vent for a complete Tile Roof Ventilation system.

Installation—The TileRidge design and installation method allows the vent to be completely concealed under the cap tile. Installation will work with mortar or other approved weather blocking material. Since the vent is installed on each side of the ridge pole, the Net Free Area (NFA) is 9 square inches per side, per linear foot. This equals 18 square inches of NFA per linear foot of installed vent. The bottom integrated hinge allows the vent to be installed on 2/12 through 8/12 roof pitches.

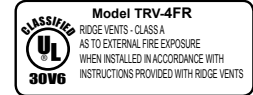
Installed Section View



- ▶ Functional and concealed ventilation installed under the cap tile.
- ▶ Works on high & medium profile “S” tile roofs with 2” x 6” ridge pole.
- ▶ Interlocking self alignment design with weatherproof over lapping joint.
- ▶ Works with mortar or other approved weather blocking material.
- ▶ 18 inches Net Free Area per linear foot of installed vent. 9 square inches per side.
- ▶ Molded-in weep openings, nail holes and end plug.
- ▶ Internal water shield.
- ▶ Also available in **CLASS A FIRE RATING**.
- ▶ 30 year transferrable warranty.

Model	LTH. (ft.)	NFA (in. ²)
TRV-4 † ‡	4	36
TRV-4FR	4	36

Available in Class A



How many Tile Vents do you need?

EXHAUST SYSTEMS	Attic floor space to be ventilated in square feet:											
	1000		1500		2000		2500		3000		3500	
	Exhaust	Intake	Exhaust	Intake	Exhaust	Intake	Exhaust	Intake	Exhaust	Intake	Exhaust	Intake
TRV-4	27'	7	40'	10	54'	14	67'	17	80'	20	94'	24

Chart instructions available on page 5.

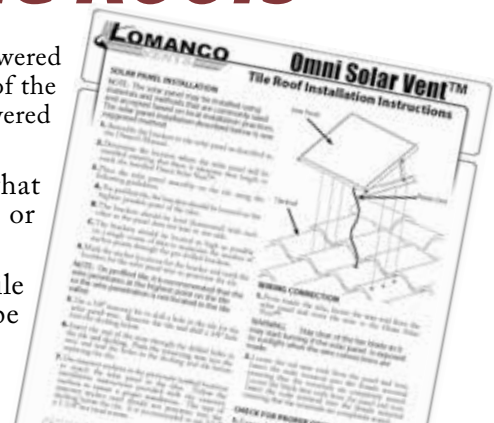
Omni Solar Vent™ for Tile Roofs

The **Lomanco Omni Solar Vent** is your attic's best choice for solar powered protection against heat and moisture from sun-up to sun-down. Use the power of the sun to cool your attic! It is the **PROVEN BEST PERFORMER** for solar powered attic ventilation.

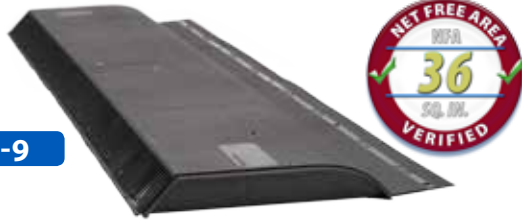
Features—The Omni Solar Vent has a unique, sleek design that blends well with roof profiles. Its design makes it impossible for birds or other pests to get into the attic through our vent.

Installation—The Omni Solar Vent is a great option for your tile roof. To install the Omni Solar Vent on a tile roof, the vent must be installed on a raised curb. The installation requires no electrician.

(See page 11 for additional information.)



TileIntake® Vent



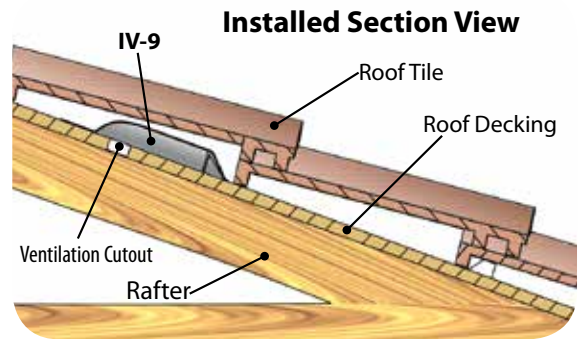
IV-9

The Lomanco® IV-9 TileIntake vent provides proper and functional intake of your attic space for tile roofs. The unique design and installation method insures complete invisibility. The IV-9 works on all tile roofs with use of a batten system.

Features—The TileIntake vent has excellent airflow design with superior weather protection and no filter to clog. Each vent features interlocking self alignment designs with weatherproof over lapping joints. The TileIntake can be used with any exhaust vent that provides the proper amount of NFA for a balanced ventilation system. If possible, Lomanco recommends using the TileRidge exhaust vent with the TileIntake intake vent for a complete Tile Roof Ventilation system.

Installation—The TileIntake vent is installed underneath the tiles and gets outside make-up air from the airspace between the roof tiles and the roof decking. A constant air supply is provided to this space from the permeability of the tile roof itself. The Tile Roof Institute states, “Natural air ventilation under the tile creates a heat transfer barrier that can provide the benefit of a cooler house in the summer and a warmer house in the winter.” The Lomanco TileIntake not only utilizes this natural air ventilation, but will also increase the circulation of the air in the batten space. This will influence the dispersion of moisture and energy performance of the roof.

The TileIntake vent will work on 2/12 and up roof pitches. The vent is molded in 4 foot lengths with a NFA of 9 square inches per linear foot. Alternate installation methods that require no batten system are available.



- ▶ Complete invisibility when installed.
- ▶ Aerodynamically curved internal baffles to minimize wind resistance.
- ▶ Excellent airflow design with superior weather protection and no filter to clog.
- ▶ Tough durable construction.
- ▶ Interlocking self alignment design with weatherproof overlapping joint.
- ▶ Quick, easy installation.
- ▶ Works on all tile roofs with use of a batten system.
- ▶ 9 inches Net Free Area per linear foot.
- ▶ Supported molded in nail holes.
- ▶ Molded-in weep openings, nail holes and end plug.
- ▶ Cut line provided for two foot lengths.
- ▶ Engineered material guarantees longevity.
- ▶ 30 year transferable warranty.

Model	LTH. (ft.)	NFA (in. ²)
IV-9	4	36



How many Tile Vents do you need?

EXHAUST SYSTEMS	Attic floor space to be ventilated in square feet:											
	1000		1500		2000		2500		3000		3500	
	Exhaust	Intake	Exhaust	Intake	Exhaust	Intake	Exhaust	Intake	Exhaust	Intake	Exhaust	Intake
TRV-4	27'	7	40'	10	54'	14	67'	17	80'	20	94'	24

Chart instructions available on page 5.

Tile Roof Turbine Vent

Lomanco offers a turbine option for your tile roof. Our BIB12TR & BEB12TR are approved for all tile and slate roof constructions.

Features—All Lomanco Tile Roof Turbines come with a Lifetime Transferable Warranty. Simply put, you can't buy a better turbine.

Installation—The Tile Roof Turbine's large flashing makes installation easy. The Tile Roof Turbine's exclusive vari-pitch base adjusts to a 12/12 roof pitch. (See pages 8-9 for additional information.)



About Intake Ventilation

Inadequate intake is the #1 cause of failure of the attic ventilation system. Specifically, inadequate intake results in extreme heat buildup in the summer and severe weather infiltration and moisture problems in the winter.

The intake system must provide as much as or more than the exhaust system in Net Free Area.

Proper vent chutes should be installed before blown in insulation, to prevent choking your intake system. A good rule of thumb is to place one between each set of rafter tails in order to maximize intake air.

If maintenance free vinyl/metal under eave panels are used, the vented panels should be installed continuously around the under eave portion of the house.

If the under eave width prohibits the use of cornice or strip vents—never use an exhaust louver as an intake vent. The most logical solution would be to install SV-10 or Deck-Air® intake vent (see page 12).

Available Colors



SV-10 Only CV-4 Only
SV-10 Only

Continuous Drip Edge Soffit Vent

- ▶ Offers two products in one: incorporates both drip edge vent and continuous soffit vent.
- ▶ All-aluminum construction.
- ▶ Perfect for homes built with little or no overhang.
- ▶ Can be cut to desired length at any point.
- ▶ The SV-10 is also available in copper.



Copper SV-10



Specialty Item Available

C-Series Cornice Vents



- ▶ All-aluminum construction.
- ▶ 8x8 perma-coated aluminum screen attached for added protection.
- ▶ Pre-drilled nail holes.
- ▶ Unique "eyebrow" designed louvers provide maximum ventilating capacity with superior weather protection.
- ▶ Cornice-mounted companion product for all types of exhaust ventilators.

Model Number	General Specifications	Overall Size (in)	Hole Size (in.)	Net Free Area
C416	Screen & Louvers	4 x 16	3 x 15	25 SQ. IN.
C616	Screen & Louvers	6 x 16	5 x 15	37 SQ. IN.
C816	Screen & Louvers	8 x 16	7 x 15	65 SQ. IN.
CR-8	Screen & Louvers	8 Dia.	7 Dia.	13 SQ. IN.

Continuous Soffit Vents



- ▶ 2¾" wide continuous strip.
- ▶ 1" x ⅛" louvered openings.

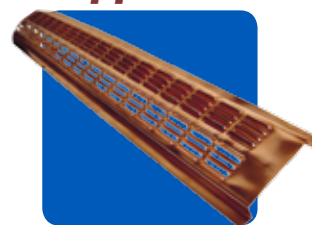
- ▶ 3¾" wide continuous strip.
- ▶ 1" x ⅛" louvered openings.

- ▶ 2⅝" wide continuous strip.
- ▶ 1" x ⅛" louvered openings.
- ▶ Instead of two ⅜" channels, there is only one with the other edge turned up 90 degrees to allow for easier installation.

Model	LTH.(ft.)	WTH. (in.)	NFA (in. ²)
105	8	2¾	72
140	8	3¾	88
190	8	2⅝	72
SV-10	10	—	63

- ▶ All-aluminum construction.
- ▶ Available in 8-foot sections and can be cut at 2-foot intervals.
- ▶ Mounting flange is recessed 3/8" for soffit board.

Copper 105



Specialty Item Available

Cirk - L - Vents

- ▶ All-aluminum construction.
- ▶ 18x16 aluminum screen attached for added protection (except for D-16 which has louvers only—no screen).
- ▶ Unique "eyebrow" designed louvers provide maximum ventilating capacity with superior weather protection.
- ▶ Prevents paint peeling by removing moisture from wall cavities.
- ▶ Provides an outlet for air movement in small confined spaces.
- ▶ Easy installation (drill and pop in).



Model Number	General Specifications	Overall Size (in.)	Hole Size (in.)	Net Free Area
L-38	Screen & Louvers	3	2½	1.63 SQ. IN
C-25	Screen only	3⅞	2½	2.34 SQ. IN
P-18	Screen & Louvers	1	¾	0.20 SQ. IN
D-16	Louver only	1	¾	0.44 SQ. IN
CV-4	Screen & Louvers	4½	4	3.00 SQ. IN
CV-3	Screen & Louvers	3½	3	2.57 SQ. IN
CV-2	Screen & Louvers	2¼	2	1.50 SQ. IN
CV-1	Screen & Louvers	1¼	1	0.23 SQ. IN

Copper CV-4



Specialty Item Available

Triangular Line

- ▶ A-Series is adjustable for steeper pitches.
- ▶ A-Series all-aluminum vari-pitch louver adjustable from 6/12 to 12/12 roof pitches.
- ▶ A Series & 900 Series have a unique blade design that provides maximum weather protection.
- ▶ 900 Series all-aluminum, vari-pitch louver. Adjustable from a 2½/12 to 9/12 roof pitches.
- ▶ 300 Series all-aluminum, twin section stationary louver. Two-piece complete louver with easy slip joint connectors. Applicable in sheds, knee walls, etc.
- ▶ 300 Series embossed painted finish for added strength, extended paint life, durability, and blending appearance.
- ▶ 8x8 perma-coated screen provided.
- ▶ Wide mounting flange.
- ▶ **Note:** A Series & 900 Series Chart available for specifications at each pitch adjustment.

Available Colors



Model	Frame LTH.	Adjustable Base LTH	NFA SQ. IN.
A50B	20¾"	28⅞" - 36⅞"	46 to 60
A56B	23⅞"	33¾" - 42⅞"	71 to 100
A88B	27⅞"	39" - 49⅞"	81 to 142
904	21¼"	34" - 41⅞"	34 to 69
*905	26¼"	42" - 51⅞"	57 to 117
906	31¼"	50" - 61⅞"	86 to 181
*907	36¼"	58" - 71"	122 to 255
908	41¼"	66" - 80⅞"	163 to 341
*909	46¼"	74" - 90½"	211 to 439
910	51¼"	82" - 100⅞"	263 to 548
911	56¼"	90" - 110⅞"	320 to 668

Model	Base LTH	Roof Pitch	Center Height (in)	NFA SQ. IN.
306-3	6	3/12	9	80
306-4	6	4/12	12	121
306-5	6	5/12	15	162
308-3	8	3/12	12	166
*308-4	8	4/12	16	242
*308-5	8	5/12	20	322
*308-6	8	6/12	24	408
310-3	10	3/12	15	273
*310-4	10	4/12	20	398
*310-5	10	5/12	25	523
310-6	10	6/12	30	605
312-3	12	3/12	18	416
312-4	12	4/12	24	609
312-5	12	5/12	30	805

* Recommended Stock Sizes

150 Series

Model (Hole Size)	Overall Size (WxH)	NFA SQ. IN.
8 x 8	10" x 10"	19
12 x 12	14 x 14	49
12 x 18	14 x 20	79
14 x 24	16 x 26	128
18 x 24	20 x 26	147
24 x 30	26 x 32	285

100 & 200 Series

Model (Hole Size)	Overall Size (WxH)	NFA SQ. IN.
8x8	11 x 11	22
8x12	11 x 15	36
8x16	11 x 19	51
*12x12	15 x 15	56
12x16	15 x 19	79
*12x18	15 x 21	90
12x24	15 x 27	124
14x18	17 x 21	106
*14x24	17 x 27	146
*18x24	21 x 27	190
24x14	27 x 17	140
24x24	27 x 27	256
*24x30	27 x 33	325
30x12	33 x 15	146
30x18	33 x 21	234
30x24	33 x 27	332

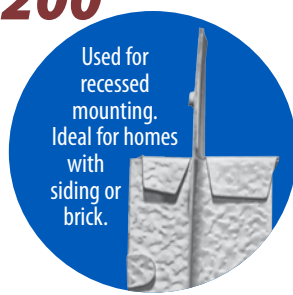
Square Line

100



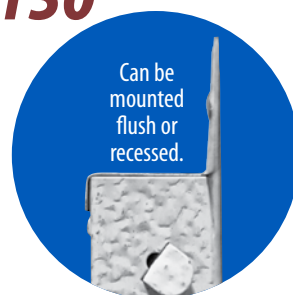
Used for flush mounting.

200



Used for recessed mounting. Ideal for homes with siding or brick.

150



Can be mounted flush or recessed.

150 SERIES

100 SERIES



- ▶ 100 Series used for flush mounting.
- ▶ 200 Series used for recessed mounting. Ideal for homes with siding or brick.
- ▶ 150 Series can be mounted flush or recessed.
- ▶ 100 & 200 offer wide mounting flange.

Available Colors



200 SERIES

GABLE VENT EXHAUST SYSTEMS	Attic floor space to be ventilated in square feet:																																															
	1000						1500						2000						2500						3000						3500																	
	Exhaust	C416	C616	C816	105/190	140	Exhaust	C416	C616	C816	105/190	140	Exhaust	C416	C616	C816	105/190	140	Exhaust	C416	C616	C816	105/190	140	Exhaust	C416	C616	C816	105/190	140	Exhaust	C416	C616	C816	105/190	140												
905*	2	12	8	5	5	4	5	9	3	18	12	7	7	5	7	13	4	24	16	9	9	7	10	17	5	29	20	12	11	9	12	21	6	35	24	14	13	10	14	25								
907*	1	12	8	5	4	4	5	8	2	23	16	9	8	7	9	16	2	23	16	9	8	7	9	16	3	34	23	13	12	10	14	24	3	34	23	13	12	10	14	24								
909*	1	19	13	7	7	6	8	13	1	19	13	7	7	6	8	13	2	37	25	14	13	11	15	26	2	37	25	14	13	11	15	26	2	37	25	14	13	11	15	26								
911*	1	28	19	11	10	8	11	20	1	28	19	11	10	8	11	20	1	28	19	11	10	8	11	20	1	28	19	11	10	8	11	20	2	55	38	22	20	16	22	39	2	55	38	22	20	16	22	39
12x18*	3	11	8	5	4	4	5	8	4	15	10	6	5	5	6	10	6	22	15	9	8	7	9	15	7	26	18	10	9	8	10	18	8	29	20	12	10	9	12	20	10	36	25	14	13	11	15	25
14x24*	2	12	8	5	5	4	5	9	3	18	12	7	7	5	7	13	4	24	16	9	9	7	10	17	5	30	20	12	11	9	12	21	5	30	20	12	11	9	12	21	6	36	24	14	13	10	14	25
18x24*	2	16	11	6	6	5	7	11	2	16	11	6	6	5	7	11	3	23	16	9	8	7	10	16	4	31	21	12	11	9	13	22	4	31	21	12	11	9	13	22	5	38	26	15	14	11	16	27
24x30*	1	13	9	5	5	4	6	10	2	26	18	10	10	8	11	19	2	26	18	10	10	8	11	19	2	26	18	10	10	8	11	19	3	39	27	15	14	12	16	28	3	39	27	15	14	12	16	28

*900 series calculations use 6/12 pitch. Square Line sizes are for 100 and 200 series.

Chart instructions available on page 5.

Lomanco® Foundation Ventilation

Lomanco provides a complete line of Foundation Vents. Lomanco offers foundation vents in Plastic, Die-Cast Aluminum, and All-Aluminum Construction. Foundation vents are available in several styles—shutter style, hinged louver style, and with a damper for tight closure.

Lomanco Foundation Vents are designed with an 8x8 perma-coated aluminum screen attached and are engineered for maximum weather protection. Most vents are available in the standard concrete block size—16”x 8”.

199
J209



- ▶ Polypropylene plastic.
- ▶ Easy working 2-slide shutter.
- ▶ J209 is larger in height to fit King and Queen Bricks.

Available Colors



189



- ▶ All-aluminum construction.
- ▶ Three hinged louvers.
- ▶ Embossed painted finish, available in black and brown, adds strength, extended paint life, and durability.
- ▶ 189G is available in galvanized mill finish only.

Available Colors



106
106L
106S



- ▶ Die-cast aluminum.
- ▶ Aluminum damper for tight closure.
- ▶ 106-L has a 1-1/2” lintel on top for extra strength.
- ▶ 106-S does not have damper.

Available Colors



2711
2712



- ▶ Extruded aluminum construction.
- ▶ Deep louvered blades.
- ▶ Overlapping top and bottom.
- ▶ 2711 replaces a single brick.
- ▶ 2712 replaces a double brick.

Available Colors



179



- ▶ Heavy die-cast aluminum.
- ▶ 3-slide shutter provides maximum ventilation.

Available Colors



142
142F



- ▶ All-aluminum construction.
- ▶ Two-slide shutter for maximum ventilation.
- ▶ Self-framed on all sides.
- ▶ 142F flush mount with pre-punched holes for ease of installation.
- ▶ 142F used as replacement of existing block vents, mobile home skirting, and portable buildings.

Available Colors



142 available in Mill Finish only.

Model	Size (in.)	Description	NFA (in. ²)
106	16 x 8	Die-cast aluminum with aluminum damper	64
106L	16 x 8	Same as 106 with 1 1/2" lintel	64
106S	16 x 8	Same as 106 without damper	64
142	16 x 8	2-slide die-stamped aluminum, self-framed on all sides	46
142F	16 x 8	Same as 142 with flange	46
179	16 x 8	Die-cast aluminum, 3-slide shutter	56
189	16 x 8	All aluminum construction, 3-hinged louver	74
189G	16 x 8	Galvanized, 3-hinged louver	74
199	16 x 8	Polypropylene plastic, 2-slide shutter	39
J209	16 x 9 1/4	Polypropylene plastic, 2-slide shutter	47
2711	1 brick	Extruded aluminum overlapping top & bottom mortar ribs 7 7/8 x 2 3/8 x 3 3/8	12
2712	2 brick	Extruded aluminum overlapping top & bottom mortar ribs 7 7/8 x 5 1/16 x 3 3/8	23

How many Foundation Vents do you need?

FOUNDATION VENT SYSTEMS	Your attic floor space to be ventilated in square feet.					
	1000	1500	2000	2500	3000	3500
106L	15	23	30	38	45	53
179	18	26	35	43	52	60
189	13	20	26	33	39	46
199	25	37	50	62	74	87
J209	21	31	41	52	62	72

Chart instructions available on page 5.

Note: Lomanco foundation ventilation product requirements are based on the 1/150 rule.

See page 14 for the PCV-1, a powered solution to upgrade foundation ventilation.

Carton Information Index

Page	Model	CTN. QTY.	WT. CTN (lbs.)
4	LOR-30	1	16 ¼
4	LOR9-4	10	17
4	LOR9-4FR	10	17
4	OR-20	1	13 ¾
4	OR-4	10	30 ½
4	OR4-N	10	33 ¼
4	OR4-S	10	31
4	PRO4-N	10	20 ½
4	PRO4SWN	10	21
6	730	6	7 ¼
6	750	6	11 ¼
6	750-S	6	11 ½
6	750-G	6	21 ¾
6	750-GS	6	22 ¼
6	750-E	6	15 ½
6	750-ES	6	15 ½
6	750 (Copper)	3	14 ¾
6	770	6	13 ½
6	770-D	4	17 ¼
6	700	6	11 ¾
6	845	6	10
6	865	6	13 ½
6	865-S	4	11
6	550	6	8
6	550-S	6	9 ¼
6	550 PRO	6	9 ½
6	550 PRO-G	6	15 ¾
6	600	6	10 ½
6	600-D	4	13
6	600-S	4	8 ¼
6	135	2	14 ¼
8	BIB-12	1	6 ½
8	BEB-12	1	6 ¾
8	BIB-12TR	1	6 ¾
8	BEB-12TR	1	6 ¾
8	BIB-14	1	7 ½
8	BEB-14	1	7 ¾
8	TIB-12	1	4 ½
8	TEB-12	1	4 ¾
8	TIB-14	1	4 ¾
8	TEB-14	1	5
8	GT-12	1	9
8	GEB-12	1	9 ½
8	IB-8 (Top)	1	4
8	VP-8 (Bottom)	1	2 ¼
8	HCAP12	25	16 ¾
8	HCAP14	25	20
10	2000	1	14 ½
10	2000 (Copper)	1	25 ¼
10	2000TH	1	16 ¼
10	2000TH (Copper)	1	27
10	1800	1	8 ½
11	OSV40	1	33
11	SGABLE40	1	21
12	DA-4	10	33
13	OW-4	10	30 ½
14	VUR-10	10	48
14	VUR-10 (Copper)	5	57 ½
14	V-PLUG	24	1
14	VUR-HSTRAP	18	1

Page	Model	CTN. QTY.	WT. CTN (lbs.)
14	LPR-10	10	66 ½
14	LPR-8	10	52 ½
14	L-PLUG	24	1 ¼
14	LPR-STRAP	18	1
14	LPR-HSTRAP	18	1 ¾
14	PCV1	6	27
15	EVACV	6/MC	13 ¼
15	EVA-34	12	6
15	DRB-24	1	21
15	WV-74-HA	1	3
15	WV-73-DA	1	3
15	WV-76-RA	1	3
15	WV-77-SA	1	3
15	Clutch Base	1	1 ¼
16	TRV-4	12	20 ½
16	TRV-4FR	12	20 ½
17	IV-9	12	17 ¼

Page	Model	Inner CTN. QTY.	CTN. QTY.	WT. CTN (lbs.)
18	C416	12	72	13
18	C616	12	72	18 ¾
18	C816	12	72	23 ¾
18	CR-8	12	36	5 ½
18	SV-10		10	28 ¼
18	SV-10 (Copper)		5	36 ¼
19	L-38	6	72	2 ¾
19	C-25	6	72	2 ¼
19	P-18	6	72	¾
19	D-16	6	72	½
19	CV-4	—	36	3
19	CV-4 (Copper)	—	36	7 ¼
19	CV-3	6	72	3 ½
19	CV-2	6	72	2
19	CV-1	6	72	¾
19	105		36	21 ½
19	105 (Copper)		15	28 ½
19	140		36	28 ½
19	190		36	22 ¼

Page	Model	CTN. QTY.	WT. CTN (lbs.)
20	A50B	1	2 ½
20	A56B	1	3 ¼
20	A88B	1	4
20	904	1	2 ½
20	*905	1	3 ½
20	906	1	4 ¾
20	*907	1	6
20	908	1	8
20	*909	1	8 ¾
20	910	1	11
20	911	1	13 ½
20	306-3	1	4
20	306-4	1	3 ¾
20	306-5	1	4 ½
20	308-3	1	5
20	*308-4	1	6 ½

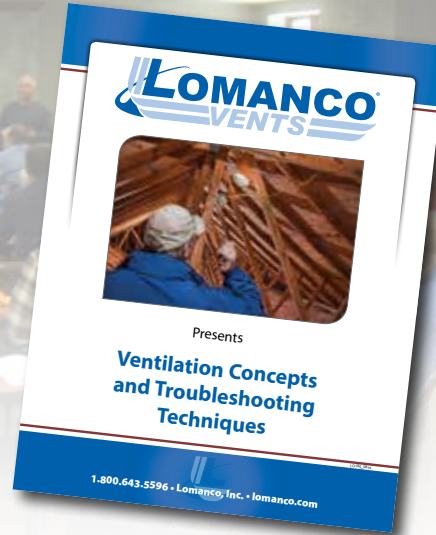
Page	Model	CTN. QTY.	WT. CTN (lbs.)
20	*308-5	1	7
20	*308-6	1	8
20	310-3	1	7 ¼
20	*310-4	1	8 ½
20	*310-5	1	10
20	310-6	1	11 ½
20	312-3	1	12
20	312-4	1	11 ½
20	312-5	1	14 ¼
20	150-8 x 8	12	4 ½
20	150-12 x 12	12	8 ½
20	150-12 x 18	12	11 ½
20	150-14 x 24	12	16 ¼
20	150-18 x 24	12	20 ¼
20	150-24 x 30	6	15 ¼
20	100-8x8	6	3 ¼
20	100-8x12	6	4
20	100-8x16	6	5
20	*100-12x12	6	5 ½
20	100-12x16	6	6 ¼
20	*100-12x18	6	7 ½
20	100-12x24	6	9 ¼
20	100-14x18	6	8 ¼
20	*100-14x24	6	10 ½
20	*100-18x24	6	12 ½
20	100-24x14	6	9 ¼
20	100-24x24	6	14 ½
20	*100-24x30	6	19 ¼
20	100-30x12	6	10 ½
20	100-30x18	6	13 ¾
20	100-30x24	6	18 ¾
20	200-8x8	6	3 ¾
20	200-8x12	6	4 ½
20	200-8x16	6	5 ½
20	*200-12x12	6	6 ¼
20	200-12x16	6	7 ½
20	*200-12x18	6	8 ¼
20	200-12x24	6	9 ¾
20	200-14x18	6	8 ¾
20	*200-14x24	6	11 ¾
20	*200-18x24	6	13 ¾
20	200-24x14	6	10 ½
20	200-24x24	6	16 ¾
20	*200-24x30	6	20 ½
20	200-30x12	6	12
20	200-30x18	6	16 ½
20	200-30x24	6	20
21	106	12	8 ½
21	106L	12	11 ¼
21	106S	12	6 ¼
21	142	12	6 ¼
21	142F	12	12
21	179	12	32
21	189	12	13 ¼
21	189G	12	13 ¼
21	199	12	18 ¾
21	J209	12	20 ¾
21	2711	12	10 ½
21	2712	12	15 ¼

* Recommended Gable Stock Sizes

Please call our customer service department at 1.800.643.5596 for any additional information, including shipping or broken carton details, on any of our quality ventilation products. Detailed warranty information and replacement parts are available at lomanco.com.

Remember, a properly functioning ventilation system consists of INTAKE and EXHAUST ventilators. Please see the ventilation guide on each product page for the proper number of vents to achieve Residential and Building Code Standards for attic ventilation, or visit the ventilation calculator at lomanco.com.

Ventilation Concepts & Troubleshooting Seminar



Lomanco Ventilation Seminars are accredited for AIA continuing education credit hours. For information about scheduling a seminar contact your Area Market Manager or call 1.800.643.5596.

Introducing the Lomanco Vent Selector App - The Ventilation Expert You Can Carry With You.



Vent Calculator

Easily calculate how many Lomanco intake and exhaust vents are needed for your installation.

Soffit Panel Tool

Calculate how much soffit panel is needed for a balanced ventilation system and diagnose inadequate soffit ventilation.

Whirlybird® Pitch Tool

Calculate the pitch of a roof and learn the Whirlybird® base number needed for Whirlybird® installation. Save a photo with a roof's pitch information directly to your phone.

Available now for download. Scan the QR or search 'Vent Selector' or 'Lomanco' in the App Store or Google Play Store.



Scan the QR Code for the following items:



Vent Selector App
Available for download on the App Store & Google Play Store

- Sales Literature
- Install Instructions
- Product Specifications
- Sales Videos
- Installation Videos
- Ventilation Calculators

SUBSCRIBE ON YOUTUBE



lomancovents

FIND US ON FACEBOOK



lomanco

LOMANCO® EVENTS

LO196_0916

Lomanco, Inc.
2101 West Main Street
PO Box 519
Jacksonville, AR 72076

501.982.6511
1.800.643.5596
Fax 501.982.1258

lomanco.com
facebook.com/lomanco
youtube.com/lomancovents

Masters in Home Ventilation Since 1946