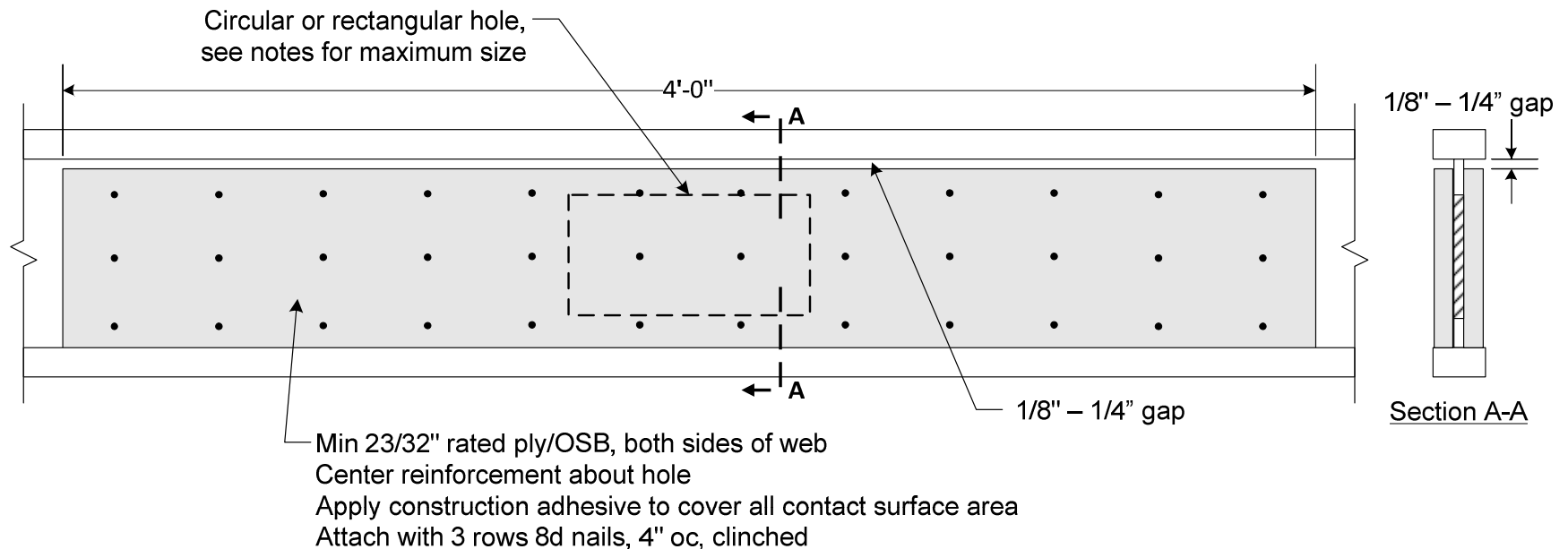




## **BCI® & AJS® Joist Web Restoration Detail**



### **Repair Detail Limitations**

- Repair valid for uniformly loaded joists only.
- Holes to be repaired shall be no closer than 2'-0" from any end bearing support (repair OK for holes at intermediate supports): contact Boise Cascade EWP Engineering for repairs involving holes closer than 2'-0" to an end bearing support.
- Maximum Hole Sizes: For circular holes, the maximum diameter allowed per web depth. For rectangular holes:
  - 9 1/2" Joists: 6" x 16"; 11 7/8" Joists: 8" x 16"
  - 14" Joists: 10" x 16"; 16" Joists: 12" x 18"
- 18" & Deeper Joists: Contact Boise Cascade EWP Engineering for possible repairs.